



GAT MONTHLY MEMBERSHIP PROGRESS REPORT

Results as of: 1/31/2023

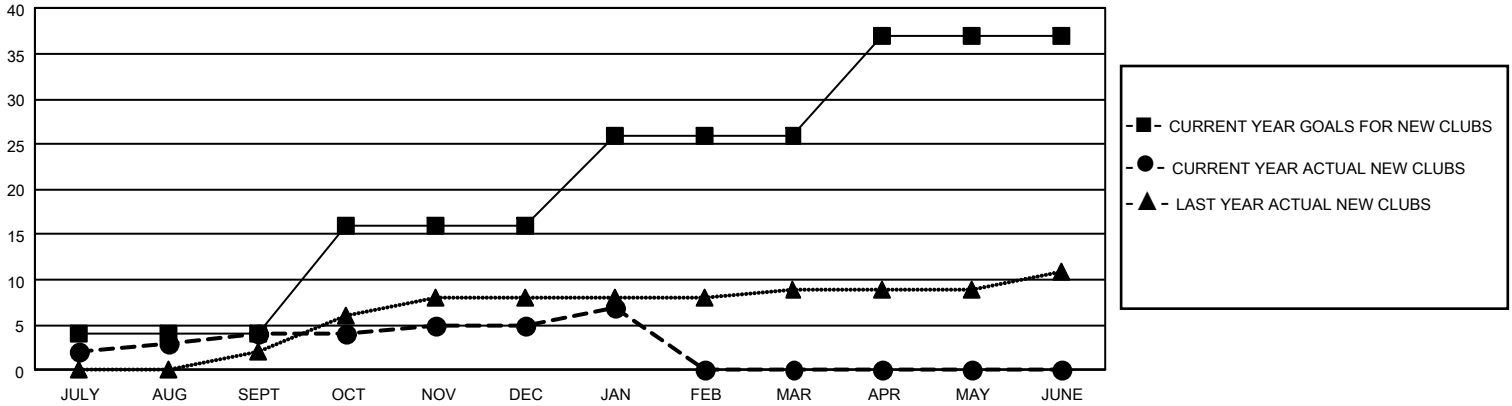
GAT Constitutional Area 2

REPORT DOES NOT INCLUDE CLUBS IN UNDISTRICTED AREAS.

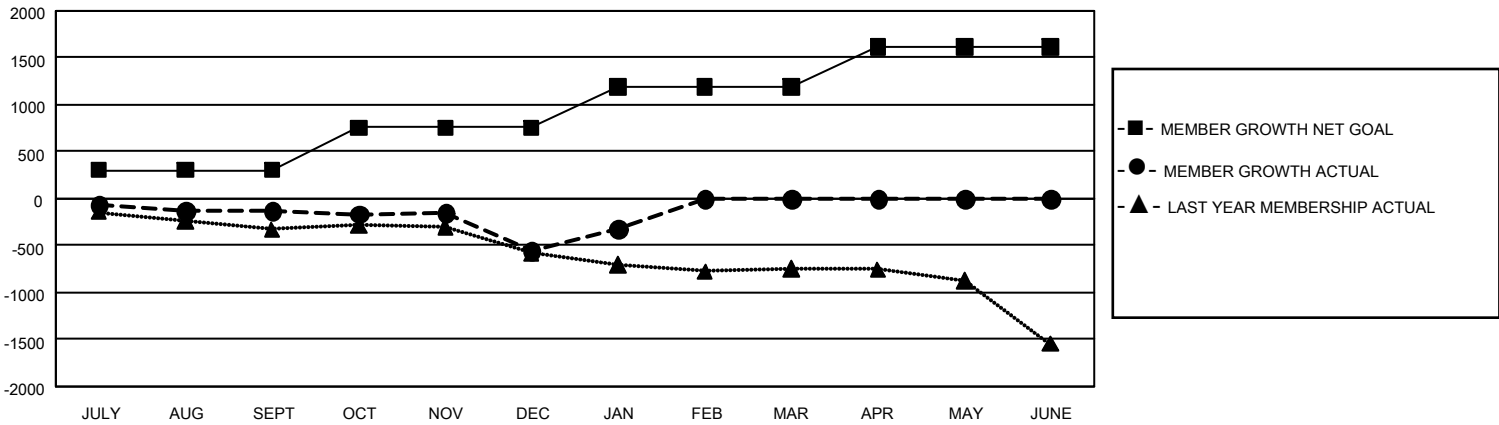
Clubs			
RESULTS FOR 2022-2023			
QUARTER	NEW CLUB GOAL	NEW CLUBS	DROPPED CLUBS
JULY/AUG/SEPT	12	4	5
OCT/NOV/DEC	36	1	11
JAN/FEB/MAR	30	2	4
APR/MAY/JUNE	33	0	0

Members			
RESULTS FOR 2022-2023			
QUARTER	MEMBER GROWTH NET GOAL	MEMBER GROWTH ACTUAL	DROPPED MEMBERS ACTUAL (including transfers)
JULY/AUG/SEPT	306	618	652
OCT/NOV/DEC	450	935	1,254
JAN/FEB/MAR	438	511	241
APR/MAY/JUNE	426	0	0

GOALS AND ACTUAL NEW CLUBS CUMULATIVE



GOALS AND ACTUAL MEMBERS CUMULATIVE



DROPPED CLUBS: 20	
DROPPED MEMBERS	
DECEASED	259
CLUB CANCELLED	98
OTHER	1,789
TOTAL	2,146

565 CLUBS OF 1,255 ADDED 1 OR MORE NEW MEMBERS

[CLICK HERE FOR CUMULATIVE MEMBERSHIP DATA](#)

GENDER DISTRIBUTION	
MALE	17,387 (65.14%)
FEMALE	9,302 (34.85%)
NON BINARY	0 (0.00%)
PREFER NOT TO ANSWER	1 (0.00%)
TOTAL FAMILY UNIT MEMBERS	4,794
FAMILY MEMBERS PAYING HALF DUES	2,463